

RESIDENTIAL SCHOOL /Prospectus

#1 Co-Ed Boarding School in Dehradun

The TonsBridge School
DEHRADUN

Innovative Curriculum | Engaging Methods | Conducive Learning Environment



The school's name arises from the River Tons, the largest Tributary of the holy river Yamuna, which blesses us by flowing alongside our lush green campus and providing for an ideal environment for the students to be connected with nature during their journey to become scholars. It also reflects the confluence of the modern with the traditional aspects of all that we are a part of.

From the Chairman's Desk

Mr. Vijay Nagar

My vision for this school is to create one of the best educational institutions in the country, nay in the world. I dream of creating an institution that will produce citizens who will be the reason for change in this world to make it a better place to live in.

I am fortunate to have with me a very talented and highly motivated team of teaching and administrative staff which, I am sure, will carry forward my vision.

All the best!!

The TonsBridge School



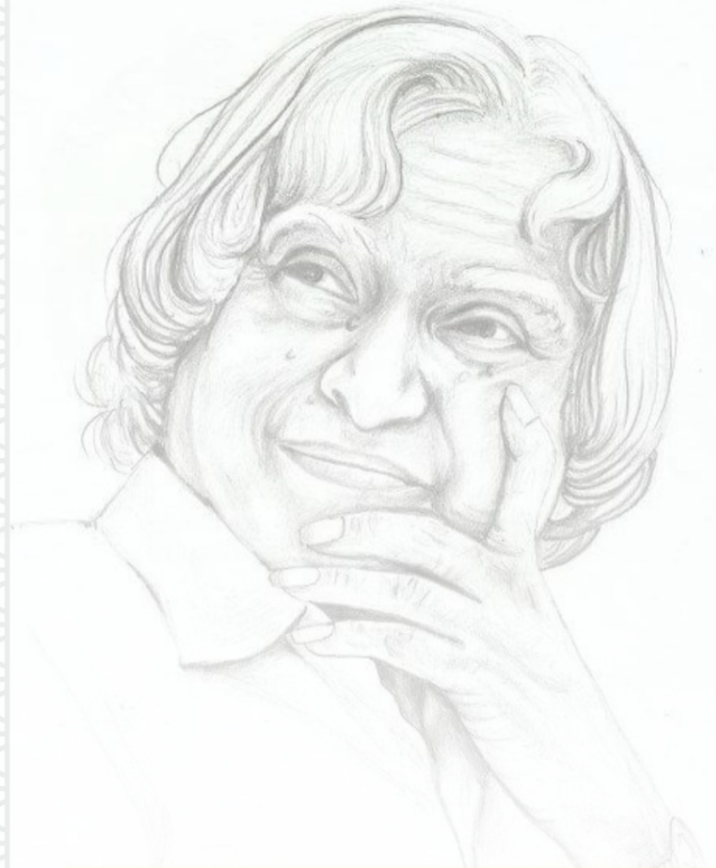


INAUGURATION BY FORMER
PRESIDENT OF INDIA



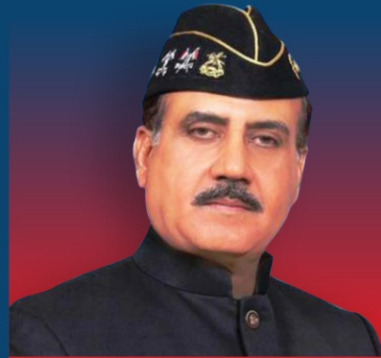
B H A R A T R A T N A
DR A.P.J ABDUL KALAM

The TonsBridge has the proud privilege of being formally inaugurated by our former President Dr. A. P. J. Abdul Kalam, Bharat Ratna.



Inspired by Dr. Kalam's vision, we strive for excellence in education.

The Governing Body



Lt. Gen. A. K. Singh
PVSM, AVSM, SM, VSM (Retd)
Former Lt. Governor



**Air Marshal
Naresh Verma**
AVSM, VSM (Retd)



Dev Raj Nagar
IPS (Retd)
Former D.G.P., Uttar Pradesh



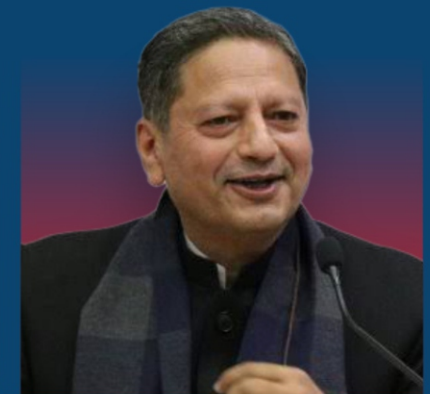
**Dr. Vijendra
Devisingh Chauhan**
MBBS, MS(Ortho), MAMS,
AO Fellow, FAIMER Fellow



M.B. Kaushal
IPS (Retd)
Former Police Commissioner, Delhi



Ms. Tarini Rawat
Legal Advisor



Dr. Sanjeev Chopra
IAS (Retd)
Former Director, Lal Bahadur Shastri
National Academy of Administration

FINEST ACADEMIC MINDS AT TONSBRIDGE

Meet our esteemed academic leaders who steer TonsBridge towards excellence, ensuring a nurturing and innovative learning environment for all.



Shailendra Benjamin
Director

Visionary leadership
and efficient
administration
driving educational
excellence.



K.K. Sharma
Administrative Officer



Bela Sehgal
Principal



Kritika Mansingh
Head Mistress

Dedicated team
fostering
knowledge,
growth, and
character in
our students.



A.K. Aggarwal
Dean of Academics




Sunil Mansingh
Head of Boarding
Administration



Dr. Christopher Singh
Head of Pastoral Care & Academic
Affairs, Counsellor & H.O.D Biology



Dr. K. Mohan Reddy
R&D Head (ICT Model &
STEM Projects)



IN ORDER TO ENCOURAGE
ITS STUDENTS TO EXCEL IN
EVERY FIELD,

THE SCHOOL HAS SET UP THE MOST MODERN INFRASTRUCTURE.

The school proudly features a Multipurpose Auditorium, a semi-Olympic size swimming pool, a semi-Olympic size football field, four synthetic lawn tennis courts, two synthetic basketball courts and a horse riding arena with attached stables housing four horses which is located at the base of a hill where there is also a nursery that supplies tree saplings for the School's extensive green-school program.

The campus is ideally suited for rainwater harvesting and for recharging the groundwater level. The School's tree-lined pathways offer therapeutic relief for sore eyes. Natural rock formations and the flora and fauna on the campus provide a natural environment for the children.



Multi Purpose Auditorium

An all-weather Multi Purpose Auditorium, with a capacity of 2500, provides the students ample opportunities to pursue a wide range of activities throughout the year.



Smart Classrooms with CCTV Surveillance

Experience modern learning in our smart classrooms, supported by top-tier CCTV surveillance for a secure environment.

Laboratory Systems

Firm in the belief that hands-on learning stands the students in good stead in the long run, the school has well-equipped state-of-the-art Physics, Chemistry, Biology and Computer Science laboratories.



World Class Learning Centre (Digital Library)

Explore a world of knowledge at our Digital Library, where limitless learning meets the digital age.





Swimming Pool

A Semi-Olympic size swimming pool provides the students with an avenue for constructive utilization of their leisure time. Plans are afoot to convert it into an all-weather pool.



Indoor Skating Rink

The indoor rink provides the students with an ideal place to hone their skating skills. Our skaters have won a large number of medals and prizes at various levels.

Skating lessons are provided to children by trained professionals and practice sessions are held in the school's skating rink.





“
**Never let the fear
of striking out keep
you from playing
the game**
”

International Level Soccer Field

Some of life's greatest lessons are learnt on the games field. This is where a person's true character is formed and is best reflected. It is here that children learn to accept victory and defeat with equanimity, develop team spirit, and strive to excel against all odds.

Firmly believing in this, the School encourages its students to actively participate in outdoor as well as indoor sports and provides the necessary infrastructure for cricket, football, badminton, basketball, roller skating, chess, carrom, table tennis, swimming, athletics, karate, lawn tennis, horse riding, etc. Regular P.T. and yoga sessions help the children to be physically and mentally alert and fit.

We believe in mass participation, exposing our students to a number of sports events at Inter-School, State, National and International Level. Every student is encouraged to join at least one school sports team. The PE. teachers we employ are young and energetic with an expertise in sports.

We have weekly achievable goals for the different skills required for a particular sport and train students accordingly.

For students to know the benefits of the sports they play, they are informed about the body parts and muscle development in playing each sport along with the requisite knowledge and skills of the game.

“
**Only one who
can see the
invisible can do
the impossible**
”

- Frank L. Gaines



Synthetic Basketball
Courts

Equestrianism

This sport is a special feature that greatly excites the young students. Experienced Instructors train the students for dressage, show jumping, tent pegging and various other skills. The school riders put up impressive displays on ceremonial occasions, apart from excelling in hard core sporting competitions. The students also develop a bond with the animal they ride.



Table Tennis



We have a large Table Tennis Hall, under the charge of a National Coach. Students of various age groups are trained here for State and National level competitions.



4 Synthetic Tennis Courts

Adventure Sports



The TonsBridge Campus



Administrative Block



Meditation Spot



Faculty Accommodation



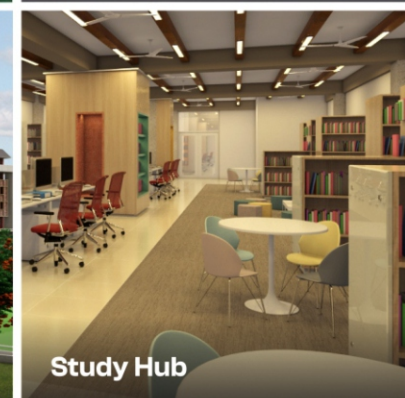
Academic Block



Amphitheatre



Residential Block



Study Hub



Reception



Dining Hall

Enriching Learning Environment

At TonsBridge, we understand that a conducive environment plays a pivotal role in fostering holistic education. Our sprawling campus boasts of state-of-the-art facilities designed to nurture young minds. From our well-appointed Residential Block to the Administration Block that ensures seamless school operations, every corner of our campus reflects our commitment to excellence. Our Academic Block, equipped with modern classrooms, inspires innovation and creativity, while our Amphitheatre provides a stage for artistic expression. Moreover, our array of labs, including Virtual, Science, Maths, Physics, Chemistry, Biology, and Robotics Labs, empowers students with hands-on learning experiences.

Sports and Recreation



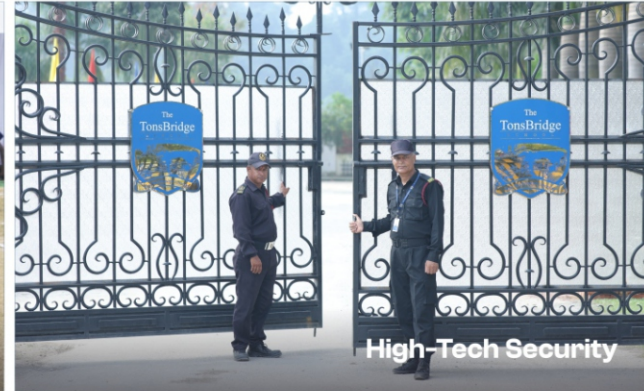
Basket Ball



Swimming Pool



Horse Riding



High-Tech Security



Football



Shooting Range



Virtual AI Lab



Yoga



Co-Curricular



Badminton Court

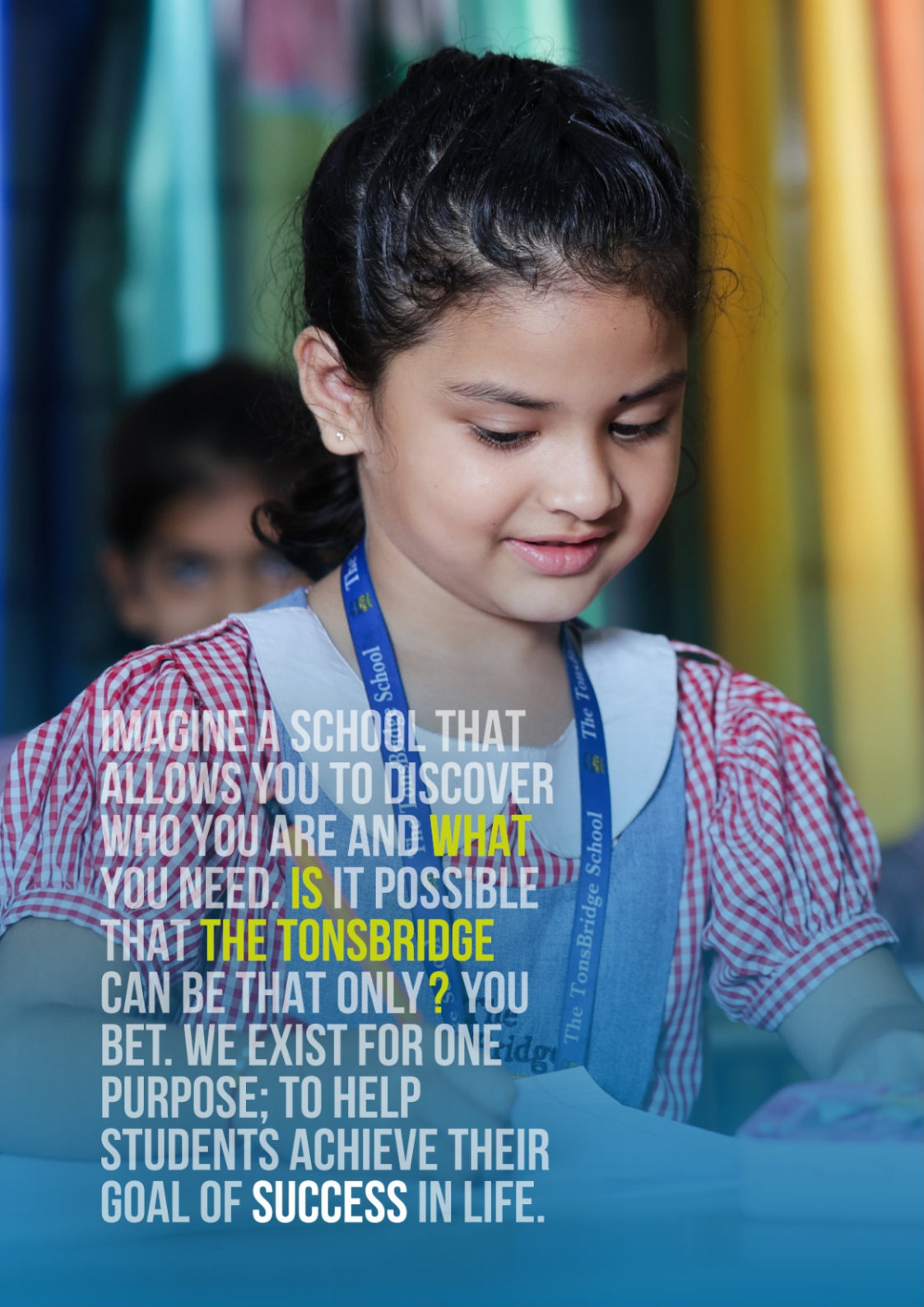
Safety & Security

At TonsBridge, safety and security are paramount. We employ a range of high-tech measures, including well-trained ex-army professional guards, high-tech entry and exit checkpoints, and GPRS-equipped buses for secure transportation. Our 24X7 CCTV surveillance ensures continuous monitoring, while washroom attendants contribute to the comfort and safety of our students. We leave no stone unturned to provide a secure and nurturing environment for every child's educational journey.



We look
into the
future

“Education is the most powerful
weapon which you can use to
change the world.”



IMAGINE A SCHOOL THAT
 ALLOWS YOU TO DISCOVER
 WHO YOU ARE AND **WHAT**
 YOU NEED. **IS IT POSSIBLE**
 THAT **THE TONSBRIDGE**
 CAN BE THAT ONLY? YOU
 BET. WE EXIST FOR ONE
 PURPOSE; TO HELP
 STUDENTS ACHIEVE THEIR
 GOAL OF SUCCESS IN LIFE.

Assessment System



Promotions at the end of the academic year are based on a system of continuous assessment. The system for classes III to V comprises four cyclic assessments, all with equal weightage. The system for classes VI to XII comprises two Formative Assessments, one Half-yearly examination and the Final examination.

Scholarships

The School offers Dr. A. P. J. Abdul Kalam Scholarships to meritorious students of classes XI and XII. The Scholarship includes free education and transport for two years, along with coaching from one of the leading institutes at the School's expense.



STEM Program

STEM (Science Technology Engineering & Mathematics) Approach to learning emphasizes logical and critical thinking skills. It provides students hands-on understanding of the world around them and equips them with the skills that are required to succeed in their future careers- the "Jobs of Tomorrow". As part of our STEM Program, we conduct theme-based activities using specialised STEM equipment in the Preparatory Stage-grades 3 to 5.





Pastoral Care

At The TonsBridge School, we prioritize pastoral excellence through a robust House system that fosters strong bonds among students, staff, and parents. Each student becomes an integral part of a smaller community within the School, ensuring a sense of security and belonging. Our dedicated Housemasters, supported by tutor teams and Matrons, provide individualized care and closely monitor each student's progress.

Our commitment to pastoral care extends beyond the House system, encompassing a range of support systems and dedicated professionals, including a 24-hour Medical Centre, School Counsellor,

and student support networks like the Anti-Bullying Council. We empower students through councils, ensuring their voices are heard on various issues.

As your ward transitions from childhood to adulthood, we recognize the trust you place in us. Our multi-layered approach to pastoral care, backed by experienced professionals, ensures that every student can confidently and joyfully embrace life at The TonsBridge School.



Dormitories

Our living facilities are meticulously designed to create a homely atmosphere for our students with separate blocks for boys and girls. Each boarding house features comfortable and generously sized dormitories, ensuring every child enjoys a well-ventilated and airy environment, with personalized windows for added comfort along with attached washrooms. The boarding houses are guarded exclusively by professional security guards and CCTV surveillance ensuring High-tech Security.



The students of the Junior Wing are accommodated in dormitories in groups of eight, whereas those of the Senior School stay together in groups of four per dormitory. Each dormitory has a dedicated Study Area for every child.



Health & Medical Care

The Medical Centre in the School campus has a tie-up with Max Healthcare & Synergy Institute of Medical Sciences.



A Residential Medical Officer assisted by two well-trained and experienced nurses from Max Super Speciality Hospital and Synergy Hospital take care of the Medical Centre which is within the hostel area and is a warm and caring place for the children.

The Medical Centre is equipped with



Routine Treatments



Fourteen-bed General Ward



Four-bed Isolation Ward



Recovery Lounge

The nurses and the are available round the clock for best assistance and medical aid. Eye, ENT, Dental and Skin check-ups are organized periodically. A routine screening is done for all students at least once a year. Complete check-ups are also carried out each quarter to ensure that our children are always in the best of health. Routine health concerns are normally attended to during specified clinic hours. After hour calls are reserved for significant medical issues. In case of emergencies, a well-equipped ambulance is available for immediate evacuation to the nearby Max Super Speciality Hospital.

Pupils are discouraged from keeping medication in the dorm for intermittent self-administration in order to minimize any possibility of misuse by the student or others.

Medical bills are incorporated into the imprest fees.

Emotional Well Being

Emotional wellbeing inspires self-care, relaxation, stress reduction and the development of inner strength. We help our students to learn and grow from their life experiences, encourage sound decision making and educate them to have zero tolerance towards bullying. Throughout their stay in the School, we inculcate in them positive attributes in life such as, resilience, owning responsibility, compassion, mindfulness and gratitude.

Food & Nutrition

A nutritious diet has a significant effect on children's growth, behaviour, mood and concentration. Healthy eating is promoted as part of a normal daily diet and lifestyle. Food matters, and we take it seriously.



Dining Hall



The School serves pure vegetarian meals using cereals, vegetables and milk from its own organic farm and dairy.

To cater to different palates, the following cuisines form an integral part of our weekly menu:

- Indian
- Thai
- Italian
- Chinese
- Continental

Under expert guidance, our kitchen team maintains top-notch food hygiene and focuses on fresh/organic, vegetarian meals. We prioritize raw ingredients, limiting the use of frozen items. A qualified nutritionist ensures a balanced diet, while feedback from the Mess Committee helps us adapt to popular choices, offering a wholesome dining experience.

A Day At TonsBridge

The School bursts into life at around 5:30 AM when boarders wake up for their daily grinding schedule. Fueled with a good dose of nutritious breakfast, the students now get ready to face the day ahead with vigour and concentration. The day unfolds in quick mode with regular lessons, lunch followed by activities, sports, preparatory classes and comes to a close with a very rewarding dinner. Once back on the bed, students fondly recollect the day gone by and mentally plan themselves for the next morning. And then sleep takes hold. 10:00 PM is the official time for the Lights Off.



The TonsBridge
Co-Ed Boarding School
/Residential Programme

Where Indian values, healthy living, and nurturing environments meet to shape well-rounded individuals.

Welcome to The TonsBridge Residential Programme, where we believe in fostering more than just academic growth, we nurture character, values, and a sense of well-being. Our holistic approach to education extends beyond the classroom, ensuring that every aspect of a student's life is enriched.

At The TonsBridge, we understand the significance of the formative years in your child's life. Our Residential Programme is designed to ensure that your child thrives academically, emotionally and socially, making their time with us truly enriching and unforgettable.

25 acres of lush, inspiring greenery.



Study in Dormitory

Your Child's Home Away from Home

Our dormitories provide a secure, comfortable haven, ensuring students feel at ease.

Healthy Living, Naturally

Our focus on organic, homegrown vegetables nurtures students' bodies, fostering holistic well-being. We prioritize healthy eating, ensuring that every meal is not only delicious but also nourishing.

Indian Values in Our Culture

We embrace India's rich heritage, instilling values that shape compassionate, culturally aware individuals.



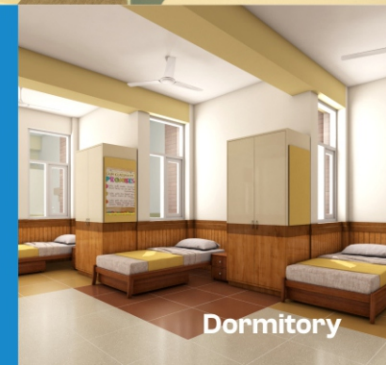
Knowledge Centre



Dining Hall

World-Class Dining Facility

Our dining infrastructure is a testament to our commitment to students' well-being. Our spacious and well-lit dining hall provides a welcoming environment for students to enjoy nutritious meals.



Dormitory



The School Houses

Everything in nature is made up of one or more of the basic elements- Earth, Water, Fire, Air and Ether. Knowledge of these elements helps us to understand the laws of nature and how they help in attaining good health and greater power, knowledge, wisdom and happiness and to understand how the universe operates. The four Houses of the School are based on these basic elements- Aqua (Water- Blue), Ignis (Fire-Yellow), Terra (Earth- Green) and Ventus (Air- Scarlet).



Topped Uttarakhand

Class 12th
CBSE Examination 2020

Devjyoti Chakrabarti - 99.6%
(Ranked 3rd in India)



Topped Dehradun

Class 10th
CBSE Examination 2020

Pratibha Mishra - 99%
(Our Students secured 6 out of
the top 10 positions in Uttarakhand)



Badminton Championship

District Badminton Championship 2022

The Team of Ananya Thakur & Rakshita
Raj Chaudhary won the Gold Medal
in the Under-19 doubles category



Roller Skating Championship

Hemaksh Joshi Won the
Bronze Medal at the District
Roller Skating Championship
2020



Topped JEE Mains

Topped JEE Main Examination
in Uttarakhand 2020

Bashar Ahmed - 99.99%



Toycathon 2021

Ishita Gupta, Ira Negi &
Manya Jaiswal
of the TonsBridge School
excelled at the National
Level Competition.



Arithmetic Genius Contest 2021

Rajarshi Chaudhary was adjudged
the State Champion Uttarakhand
in the SIP Arithmetic Genius
All India Online Contest.



National School Award

The TonsBridge School was
Awarded for 'Most Technically
Advanced School of Uttarakhand
2023'



National School Award

The TonsBridge School was
Awarded for 'Education
Excellence Award in
2021 & 2022'



Uttarakhand Educators' Summit

Best Senior Secondary School
of Year 2020 (Uttarakhand
Educator's Summit)



Wynberg Allen 2022

TonsBridge secured the 1st position
in a chess tournament organized
by Wynberg Allen 2022



Raman Award 2023

TonsBridge won
Raman Young Science
Innovator Award

School Essentials

 **DREAM IS NOT THAT WHICH YOU SEE WHILE SLEEPING, IT IS SOMETHING THAT DOES NOT LET YOU SLEEP!**

- Dr. A.P.J Abdul Kalam

The TonsBridge follows the CBSE syllabi, within which flexibility of methodology and the use of experimental learning systems is encouraged. This approach helps to eliminate the need of learning by memorization and develops a healthy and positive attitude towards learning. The system of evaluation takes into account the individual nature of every child and tries to give an adequate feedback on the student's learning, without putting pressure on him/her. As the child progresses through the classes, the assessment is gradually modified to prepare him/her for external tests and competitive exams.

Admissions to the residential programme at TonsBridge are accepted from Grade III Onwards



The selection of the candidates depends upon their performance in the entrance test/interview and availability of seats in the concerned class.



Assessment of the child for admission is also based on the following factors :

- Academic readiness and motivation.
- Social and emotional development.
- Family co-operation in working with the school and meeting the needs of the students.
- Ability of the school to serve the needs of the child.

The entrance test will be held for English, Hindi, Mathematics and/or any other subject which may be considered necessary.

**WE GO BEYOND
OUR TEXTBOOKS**
WHERE INNOVATIONS BEGINS

For online registrations visit our website
www.thetonsbridge.com



Scan QR Code
Check out website →



Our Collaborations :

Tech Next
Opening Student Apertures

TRINITY
COLLEGE LONDON





Faculty

At The TonsBridge, we recognize the pivotal role of teachers as artisans moulding the futures of our students, and thus, we diligently seek out the most exceptional talent to nurture our students during their formative years. Our faculty consists of highly qualified, trained and dedicated educators who share our unwavering commitment to empowering children for a brighter tomorrow. Nevertheless, we firmly believe that our faculty members are the parents of our students. Recent studies underscore the profound impact great teachers have on a student's achievement, emphasizing the importance of recruiting, training,



Education is the key to success in life, and teachers make a lasting impact in the lives of their students.

- Soloman Ortiz

and rewarding such educators. Equally crucial, however, is the role of our parents who are deeply invested in their children's education, as they too have the power to significantly shape a student's academic success.

Our Associates

Our Technology Partner

 **Microsoft**
Showcase
School

TRINITY
COLLEGE LONDON



ROCKSPORT



The TonsBridge = Well-being

What is “The TonsBridge”?

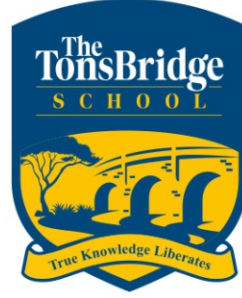
The philosophy of “The TonsBridge” is to enjoy the process of moving forward step by step, with resolve, towards the realization of your dreams and aspirations.

TonsBridge empowers people to solve issues for themselves and to enjoy life to the fullest at every stage by offering them the tools and support they need to create well-being. We aim to be a globally respected school that is supported by and indispensable to parents, communities and society. We contribute positively to society now and in the future.

Dedicated to the ideal of “The TonsBridge = Well-being” we constantly strive to support our students towards realizing their dreams and potential.

Our approach to service is inspired by our strong determination to work toward the creation of a sustainable society by contributing to the future as well as the present.





TRUE KNOWLEDGE LIBERATES

विद्या अमृतम् अश्नुते

The TonsBridge School

📍 Tons Confluence, Subharti Hospital Road, Dehradun

🌐 www.thetonsbridge.com ✉ info@thetonsbridge.com

☎ +91 9897292071, +91 7060355055



Like us on Facebook/Instagram
[@thetonsbridgeofficial](https://www.facebook.com/thetonsbridgeofficial)



Follow us on Twitter
[@TheTonsBridge](https://twitter.com/TheTonsBridge)

www.thetonsbridge.com



Scan QR